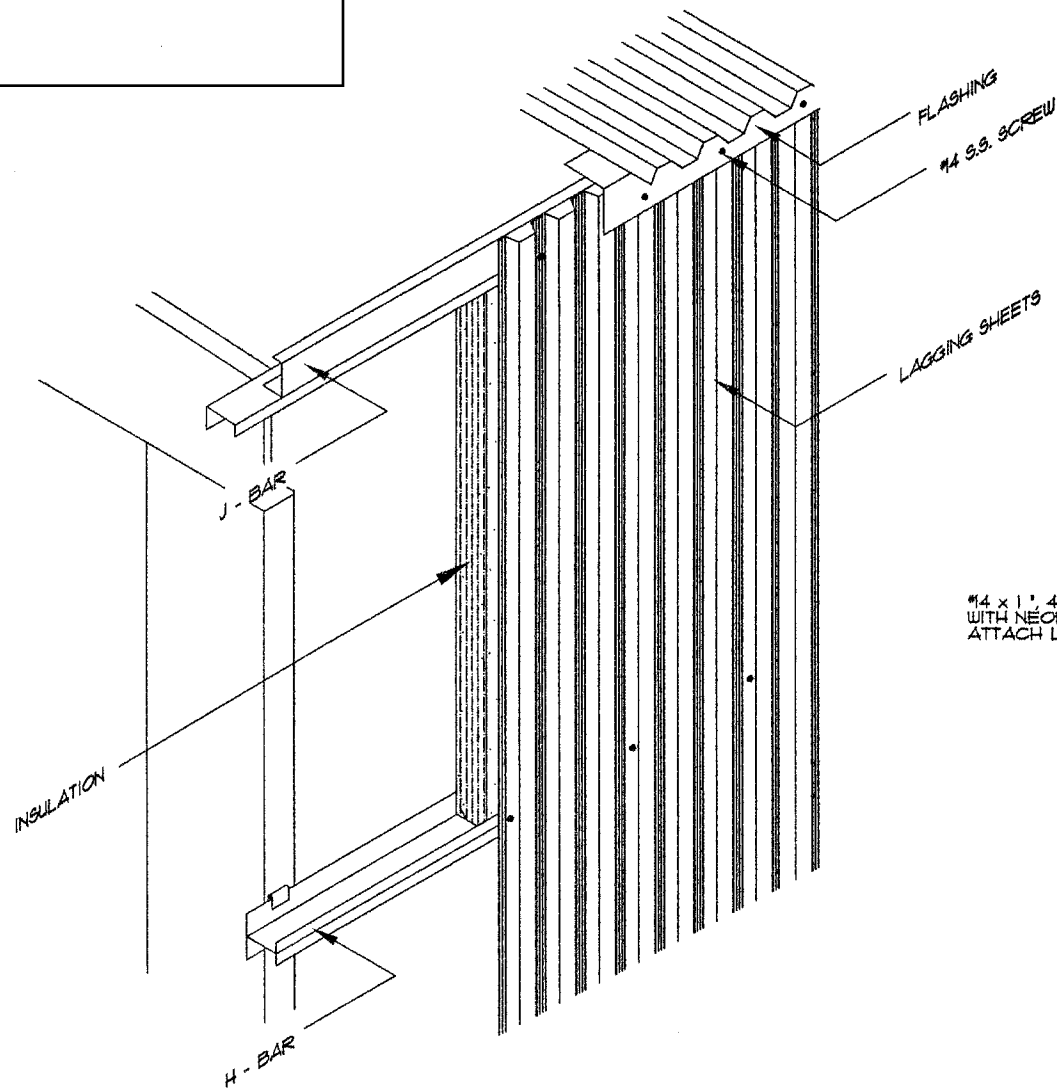


FOR TEC



SUBGIRT SPACING:

24' MAX. ON ROOF

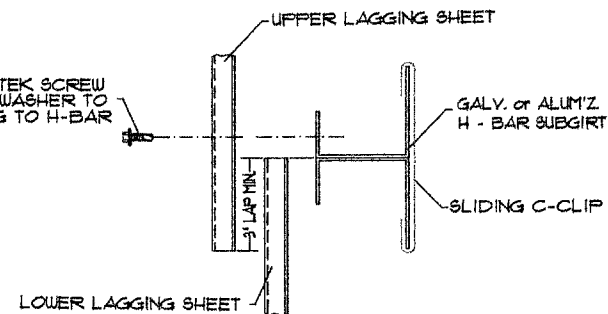
48' MAX. ON SIDES

36' MAX. ON BOTTOM

LEAVE 1/2' GAP AT END OF EACH SECTION OF SUBGIRT TO ALLOW FOR EXPANSION OF EQUIP.

FLASHING END-LAPS TO BE 3' MINIMUM. DO NOT FASTEN THESE OVERLAPS TOGETHER.

#14 x 1", 410 S.S. TEK SCREW WITH NEOPRENE WASHER TO ATTACH LAGGING TO H-BAR



LOWER LAGGING SHEET TO BE FLUSH WITH C OF H-BAR

TYPICAL LAP DETAIL

SECTION @ H-BAR SYSTEM

FOR PRICING AND AVAILABILITY CONTACT  
ALLSTATE INSULATION 888-881-4822  
E-MAIL allstateinsulation@yahoo.com

THIS DRAWING IS PROPRIETARY TO "ALLSTATE INSULATION" WITH PERMISSION FROM VMS AND IS GRANTED UPON CONDITION THAT IT IS NOT TO BE COPIED IN WHOLE OR IN PART, OR USED FOR SUPPLYING INFORMATION TO OUTSIDE PARTIES AND WILL BE RETURNED UPON REQUEST.

FOR:

DRAWN BY:

*Mike Davidson*

H-BAR SYSTEM ASSEMBLY

SCALE:

N.T.S.

DATE:

8/25/95

DWG. NO.:

95 - W1